



Risk Radar Enterprise

RRE is an easy-to-use web application for enterprise-wide, program, and/or project Risk Management. It enables effective management and communication of project **Cost, Schedule, Technical and Performance Risk** within a common enterprise framework. RRE gives managers and their teams the visibility they need to proactively **Identify, Analyze, Track, Control, Mitigate, and Report** risk.

- Easy-to-use web functionality
- Multi-level risk roll-up capability
- Flexible and affordable licensing
 - ✓ Buy only what you need - When you need it
 - ✓ “Floating” concurrent user licenses
 - ✓ No license renewal fees
- Customizable features:
 - ✓ 3x3, 4x4, or 5x5 Risk Cube (Probability/Likelihood vs. Impact/Consequence)
 - ✓ User defined Risk & Project Attributes
 - ✓ User defined Project Milestones
 - ✓ Up to 14 customizable Risk Triggers w/ automatic email notification
- 24 standard risk reports, plus:
 - ✓ Ad Hoc reports (User defined data fields)
 - ✓ Export raw risk data to create custom reports
 - ✓ 19 selectable report filters
 - ✓ Risk Mitigation “waterfall” chart
- RRE supports guidance from the PMI PMBOK®, IEEE, SEI CMMI and DoD Risk Management Guide for DoD Acquisition
- **RRE is NMCI Certified!**



9001:2008
Risk Assessment Process



Minimum Application Server Hardware:

- 2GB RAM
- P4 or Xeon processor (1.6GHz or faster)
- 40GB hard drive space

Application Server Operating Systems:

- Windows Server 2000, XP, or 2003

Web Application Server:

- Apache Tomcat version 5.5, or newer

Java Environment:

- Java 2 Enterprise Edition (J2EE) version 5.0 or newer

Databases:

- MySQL 5.0, or newer
- MS SQL Server 2000, or newer
- Oracle 8i, or newer

NOTE: Oracle and MS SQL Server Database Users:

Oracle 8i or newer (Must use the Oranxo JDBC 3.0 driver (\$799 Web License) from i-Net Software)

American Systems will provide you with two FREE Project Licenses and four Concurrent User Licenses (\$1,000 value))

<https://www.inetsoftware.de>

MS SQL Server 2000 or newer (Must use free open source jTDS JDBC 3.0 driver from SourceFORGE.net)

<http://jtds.sourceforge.net>

Client (End User): RRE has been tested with MS Internet Explorer (v6.0 or newer) with JavaScript enabled.

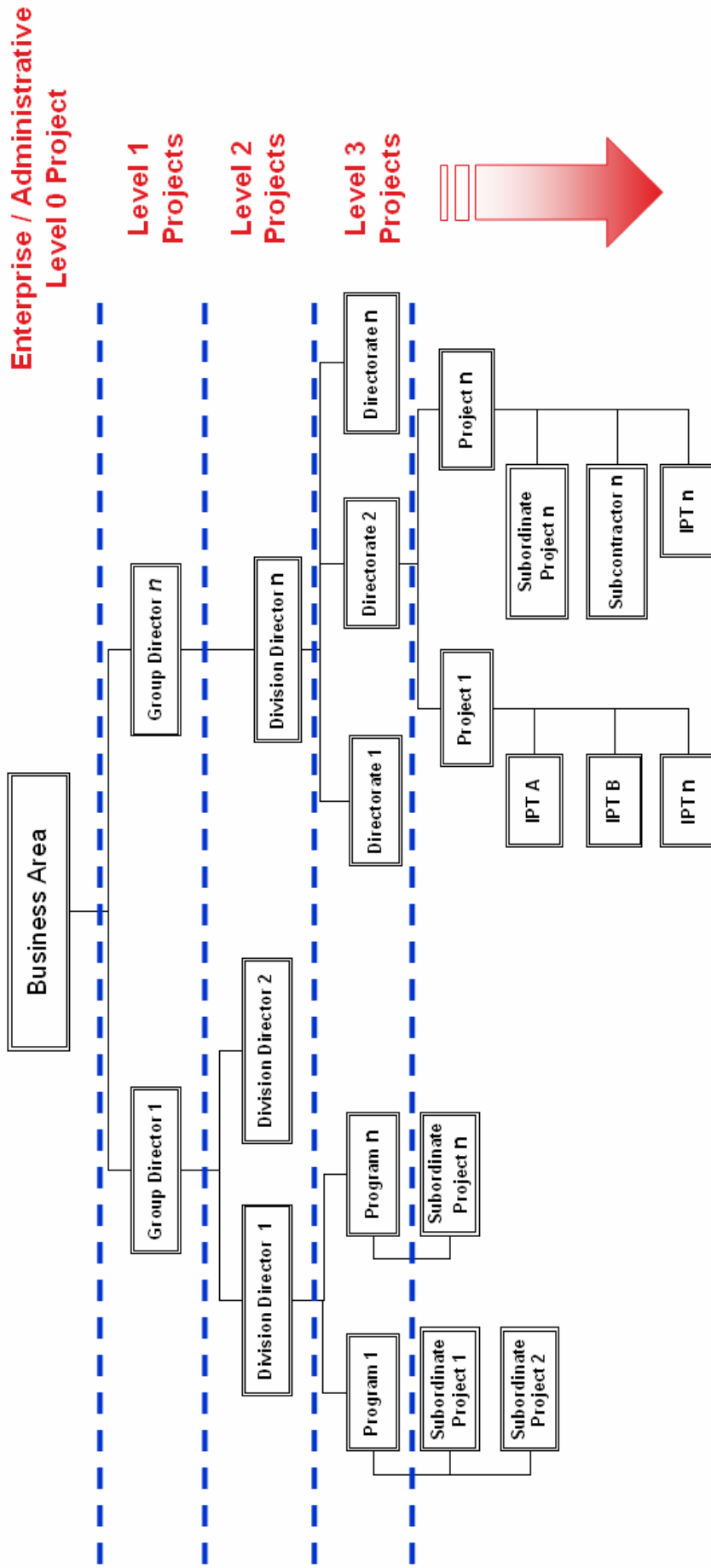
For more information please visit us on the

Web: www.AmericanSystems.com

Email: RiskRadar@AmericanSystems.com

Phone: (757) 548-0708, ext. 3100 or 3101

Scalable Enterprise Framework



- In the example organization above, each activity represents a Project and is assigned a Project License
- A Project License provides a group of users all the features and functionality of RRE to manage their risks in a private workspace, independent of other projects within the enterprise
- The number of Projects is determined by the number of Project Licenses you own
- Upper level parent projects can view and “roll up” risks from their lower level child projects
- Risks can be shared and transferred among projects

Email: RiskRadar@AmericanSystems.com

Phone: (757) 548-0708, ext. 3100 or 3101

Web: www.AmericanSystems.com

